

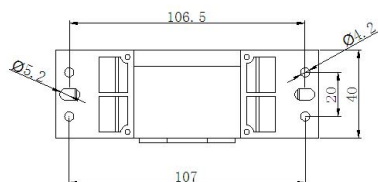
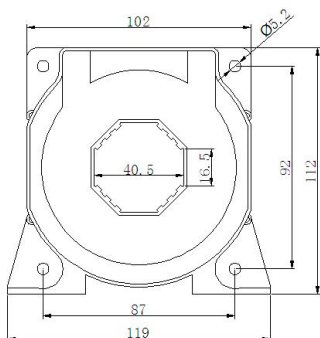
H024.1 AHBC-LT1005 High Precision Hall Current Sensor V1.1

1.Product Description

AHBC-LT1005 high-precision Hall current sensor is insulated between the primary and secondary, no position error, can really measurement resolution 1000:1, for precise measurement of DC, AC and pulse current.

The product meets the industry standard: JB/T7490-2007 《Hall Current Sensor》.

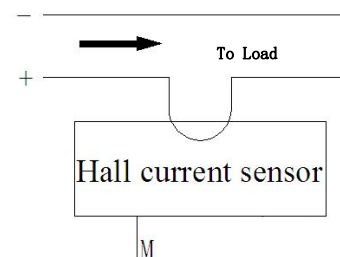
2.Technical parameters and dimensions



Unit: mm

Rated Input Voltage	1000A	
Measure The Voltage Range	1500A	
Measuring Resistance	$\pm 15V$ @ $\pm 1000A_{max}$	0(min) 20(max)
	@ $\pm 1200A_{max}$	0(min) 7.5(max)
Turns Ratio	1:5000	
Rated Output Current	$2mA \pm 0.1\%FS(10A)$, $200mA \pm 0.1\%FS(1000A)$	
Precision	0.5 级	
Voltage	$\pm 12V \sim \pm 24V$	
Power Consumption Current	$20mA + I_s$	
Zero Current Offset	$\pm 0.2mA$	
Response Time	$< 1\mu s$	
Linearity	$\leq 0.05\%FS$	
Insulation Voltage	3kV/50Hz/1min	
Bandwidth (-3dB)	0-100KHz	
Secondary Coil Resistance	50 Ω	
Operating Temperature	$-40 \sim 85^{\circ}C$	
Storage Temperature	$-40 \sim 85^{\circ}C$	

3.Mode of Connection



instrument input positive pole	Connect the negative pole of the instrument input to the power ground
--------------------------------------	---

